



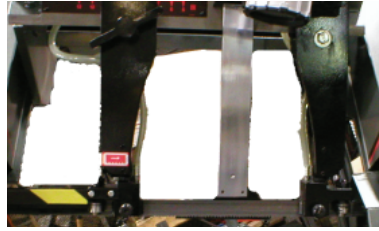
Spartan PA10/3 Production Bandsaw



- Round Cutting Capacity: 10"
- Rectangle Cutting Capacity: 8" x 11.5"
- Saw Blade Dimensions: 11'6" x 1.25" x .045"
- Blade Speed: 70-330 SFPM
- 5 HP Blade Drive
- 1 HP Hydraulic Pump
- 1/8 HP Coolant Pump
- Table Height 23"
- Machine Weight: 3400 lbs. (1542kg)
- Work Load Capacity: 5600 lbs. (2445kg)
- Maximum Index Length: 16"



Blade Tension is hydraulic and is calibrated to provide accurate cutting and optimum blade life.



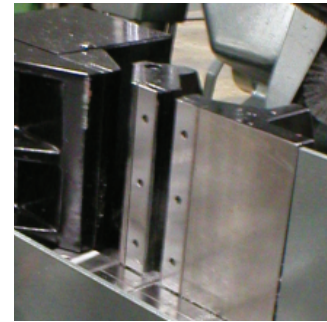
The **Fast Approach Device** reduces cycle time by positioning the saw frame at the correct work height.



The **Operator Control Panel** is conveniently located at the front of the machine providing the operator with a clear view of the cutting area.

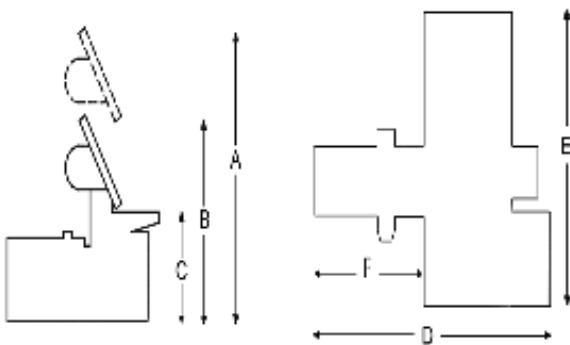


Length Setting is simple and accurate using the locking hand wheel and digital readout. Lengths can be set to as little as thousandths of an inch with positioning accuracy of +/- .005" (Also available with the optional EPC Programming Control).



Split Front Vise Jaws hold the work securely on both sides of the blade minimizing vibration and burs, while also helping to reduce the remnant length to as little as 2". The full stroke hydraulic vises provide ease of operation and simplify set up.

Machine Dimensions



	PA 10/3
A	64"
B	44"
C	23"
D	74-3/4"
E	77"
F	43"



Marvel Mfg.. Co. Inc.
 3501 Marvel Dr.
 Oshkosh, WI 54902
 Phone: 920-236-7200 or 1-800-472-9464
 Fax: 920-236-4156

WWW.SAWING.COM